

Installation Instructions for Removable Rubber Interface

Before you start....

Use a continuous rail throughout, grind welds flush, then sweep rail and plates to remove any debris.

Installation Procedure

- 1 Layout the rubber Interface end to end and fasten together with Sure-Lock end fasteners. The Sure-Lock plate and hex nuts are attached within the cut-outs. (Fig. 1)
- 2 Place rubber Interface into the web of the rail as shown (Fig. 2)
- 3 Seat rubber Interface into rail by hitting it with a sledge as shown (Fig. 3)
- 4 Cover openings for Sure-Lock end fasteners with duct tape (Fig. 4)
- 5 Secure rubber Interface with plastic ties every 24 in. to hold it tight to the rail while concrete is being poured. After deck concrete sets, plastic ties can be trimmed off the top of the interface with a knife. (Trim with knife blade towards the concrete deck to prevent cutting the top surface of the rubber interface.)
- 6 To isolate rail fasteners from concrete pour, fill area between mounting plates with styrofoam (or similar material). Leave the bottom of the back legs of the rubber Interface exposed so that they are supported by the finished concrete. (Fig. 5)

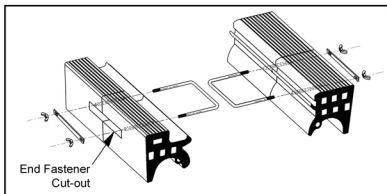


Figure 1

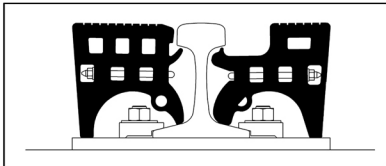


Figure 2

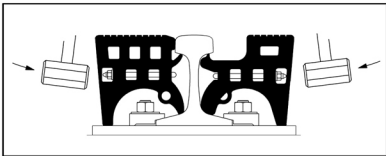


Figure 3

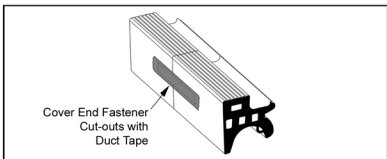


Figure 4

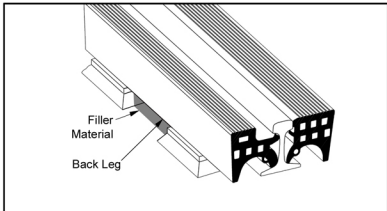


Figure 5

For Assistance Please Call:
Toll Free: 888-222-5968